



Tasmanian Aquaculture and Fisheries Institute

SEAMAP Tasmania

[SEAMAP Home](#)
[Habitat Maps](#)
[Photo Gallery](#)
[Video Gallery](#)
[Contact Us](#)
['What's New!'](#)
[TAFI Home](#)

What is SEAMAP Tasmania?

The **Tasmanian Aquaculture and Fisheries Institute** is currently conducting a project called **SEAMAP Tasmania** that aims to improve our understanding of the marine environment and management of the marine resources throughout the State coastal waters by:

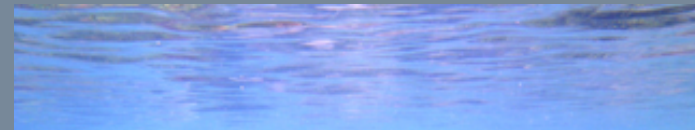
- mapping the distribution of seabed habitat types in estuarine, coastal and marine waters of Tasmania through photographic, acoustic, biological and sediment sampling
- consolidating all existing Tasmanian seabed habitat mapping data into a single Geographic Information System and relational database
- providing a series of seabed habitat maps for Tasmanian State waters and distribute these widely on the Internet and other digital forms
- promoting and coordinating postgraduate projects in the area of seabed habitat mapping.

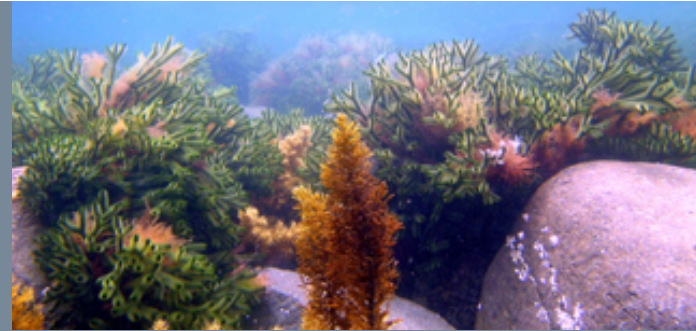
This information is assisting with a wide range of coastal research and planning issues including:

- Marine Protected Area development
- Environmental impact modelling and assessment
- Fisheries assessments
- Habitat monitoring
- Marine farm planning
- Localised coastal developments
- State of Environment (SoE) reporting, and
- Pollution and oil spill response.

Seabed habitat mapping is also being complemented with targeted habitat monitoring in particular areas that examines changes in habitat extent and structure at a finer resolution over time.

Methodology





[Aerial Photography](#)

[Field Data Collection](#)

[Underwater Video](#)

[Cartography](#)

[Habitat Classifications](#)

Publications

Click [HERE](#) to view the latest SEAMAP publications

Current Projects

Click [HERE](#) to see the list of current SEAMAP funded projects

Completed Postgraduate Projects

- [Monitoring habitats in shallow marine temperate waters \[R.Mount\]](#)
- [Spatial uncertainty estimation techniques for seabed mapping \[V.Lucieer\]](#)

Current Postgraduate Projects

- Development and application of acoustic and video assessment in seabed mapping [M.Lawler]

Related Projects

- Environmental assessment of new marine farming zones
- Estuarine Health - status and indicators

All material on webpages under the domain <http://www.utas.edu.au/tafi/seamap/> is, unless otherwise stated, the property of The Tasmanian Aquaculture and Fisheries Institute. These materials are protected by copyright and other intellectual property laws. Information received through this website may be displayed, and printed for your personal, noncommercial use only. You may not reproduce or retransmit the materials, in whole or in part, in any manner.

© TAFI 2004

Web page update and design by Vanessa Lucieer

This page was last updated April 2007